



Product Code: MTR

Product Name: Minimalist Rose for Turns

Description: Compatible with all of our Elements and Classic turns*, and befitting a luxury, clean aesthetic.

At only 16mm in diameter the Minimalist Rose for turns sits unobtrusively on the door, allowing the fine detail and silhouette of the hardware to take centre stage.

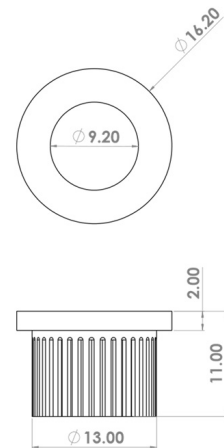
*The Minimalist Rose is not compatible with the 6430 and 6432 turns.

Pair with our [Minimalist Rose for levers and knobs](#), and [Minimalist Escutcheon](#).

Shown here in our Zero Black finish.

Product Information

For installation, drill a 13mm (1/2") hole to allow a friction fit.



Available in all Croft finishes excluding DAB, DAN, DORB, RBMA, TB,